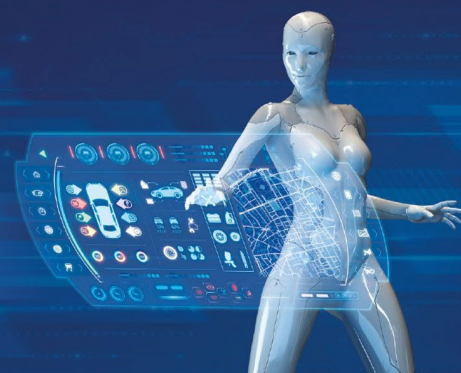


 **autopromotec 2022**

25-28 Maggio 2022
Bologna, Italy

SNAP-ON EQUIPMENT SRL

Pad. 19 Stand B 28



May 25-28

Hall 19 Stand B28

#

PRESS KIT

HOFMANN  **JohnBean.** **CARTEC**  **SUN**  **CAR-O-LINER**
 **JOSAM** **truckCam**  **BLACKHAWK** **BOXER**



TOTAL SHOP SOLUTIONS is a family of Snap-on® brands that brings together best-in-class automotive repair products from across the industry. From wheel balancers, wheel aligners and diagnostics to brake lathes, automotive lifts, and collision repair, Total Shop Solutions' brands offer a unique breadth of solutions to outfit any shop from floor to ceiling.

At our booth, Hall 19, Stand B28, at the Autopromotec show, we will be displaying and demonstrating products from the following brands:

JohnBean

ECOTECHNICS

HOFMANN

JOSAM

CAR-O-LINER

CARTEC

SUN

BLACKHAWK

LEARN MORE ABOUT HOW SNAP-ON® CAN IMPROVE YOUR BUSINESS.

snapon-totalshopsolutions.com

HOFMANN **JohnBean** **CARTEC** **SUN** **CAR-O-LINER**
JOSAM **truckCam** **ECOTECHNICS** **BLACKHAWK** **BOXER**



TOTAL SHOP SOLUTIONS
Snap-on.

JohnBean

Tru-Point™ for ADAS Calibration



- ✓ **DEM COMPLIANT**
- ✓ **VEHICLE ALIGNMENT CHECK**
- ✓ **PROOF OF TARGET PLACEMENT**
- ✓ **LEVEL FLOOR NOT REQUIRED**
- ✓ **NO MANUAL MEASUREMENTS**

FEATURES/BENEFITS

- **CHECK** - Tru-Point™ uses highly accurate advanced camera technology to create a three-dimensional model of the vehicle to provide you with a complete analysis of the vehicle alignment condition in under a minute, right on the shop floor.
- **PLACE** - Tru-Point™ streamlines the process to quickly help you place the targets in the precise OEM-required location without lasers and tape measures or the need for a level floor, and without worrying about any reference value, guidebook, or manual inputs.
- **CALIBRATE** - Designed to grant you total freedom, Tru-Point™ allows you to use any ADAS-capable scan tool to complete the calibration process. For the most robust features and comprehensive, market-leading ADAS coverage, choose Snapon® diagnostics scan tools to complete the job. No manual measurements.
- **PROVE** - An easy-to-read report provides proof that you executed all steps required for a perfect calibration, guaranteeing you are putting a safe vehicle back on the road and increasing your customer's satisfaction and confidence in your business.

HOFMANN  **JohnBean** **CARTEC**  **SUN** **CAR-O-LINER**

 **JOSAM** **truckCam**  **ECOTECHNICS** **BLACKHAWK** **BOXER**



TOTAL SHOP SOLUTIONS
Snap-on

JohnBean

V3300 Worry-free Diagnostic Wheel Aligner



The V3300 alignment system guides technicians of multiple skill levels through an accurate alignment in less time, reducing errors. Its advanced notification system monitors the entire alignment procedure to automatically correct and compensates for simple issues without slowing you down, ensuring that every alignment is complete on time.

If you are looking for a worry-free wheel aligner you can trust to be accurate while saving you time and increasing your revenue; the V3300 is your system of choice.

FEATURES/BENEFITS

- EASY, INTUITIVE WORKFLOW - designed to provide all the features you need for core wheel alignment workflow, removing unnecessary steps with a clean and easy-to-use interface
- AUTOMATIC VEHICLE HEIGHT TRACKING - the camera system follows the height of the vehicle, eliminating the need to adjust the aligner when you move the lift
- VODI™ - guides the technician through the measurement process and reduces the amount of time spent walking back and forth from the vehicle to the aligner
- FULLY MOBILE - no floor drilling or permanent installation necessary. Unique, folding low-profile beam and built-on wheels: easily store or move the aligner around the shop
- AC400 WHEEL CLAMP - attaches to the tyre with limited clamping force without touching the rim for a safe, fast and consistent placement every time

HOFMANN  **JohnBean.** **CARTEC**  **SUN**  **CAR-O-LINER**

 **JOSAM**  **truckCam**  **ECOTECHNICS**  **BLACKHAWK**  **BOXER**



TOTAL SHOP SOLUTIONS
Snap-on



Introducing the new Imaging wheel aligner system geoliner® 609



Uncompromising features in a compact design – the geoliner® 609 has all the same core features of our advanced imaging alignment systems in a compact, economical design.

Ready out-of-the-box with minimal installation, this alignment system offers greater lift compatibility with an extended camera beam and two-wheel elevated compensation mode - making the geoliner® 609 a flexible alignment solution to support in-house alignment services.

FEATURES/BENEFITS

Versatility

- Minimal shop space, no console needed
- Control the aligner from anywhere in the shop using the tablet
- Rotating camera beam for smaller storage footprint

Efficient Design

- Lightweight, allows one-person installation
- Pre-assembled, ready-to-install
- Robust mechanical winch for precise camera beam movement

Intelligent Software Tools

- Elevated two-wheel compensation mode for customers with limited space, no alignment lift, or vehicles too large for the lift
- Predictive alignment flow and automatic error detection system
- Video-speed imaging for fast roll-back compensation
- Patented VODI™ technology guides efficient measuring

Online Connectivity

- Network updatable software and specifications
- Quick access to vehicle specifications and repair information, TSBs, recalls, TPMS, and ADAS information
- Cloud services printing

HOFMANN  **JohnBean** **CARTEC**  **SUN** **CAR-O-LINER**

 **JOSAM** **truckCam**  **ECOTECHNICS** **BLACKHAWK**  **BOXER**



geoliner® 770 Mobile Imaging Wheel aligner



Ideal for high-volume shops that specialize in alignments and wheel service, the Hofmann® geoliner® 770 Mobile Imaging Wheel Aligner delivers sophistication in a compact footprint, designed to fit where you need it and move pretty much anywhere else.

The short boot-up gets your team to every job quickly, with faster measurements for more efficient, more accurate alignments every time.

FEATURES/BENEFITS

Unique versatile configuration

- Fully mobile – Folding low-profile beam and built-on wheels: easily store or move the aligner around the shop
- Plug and Play – The unit is delivered fully assembled: just plug it in and start doing alignments.
- Self-calibrating – Start alignments with complete accuracy, in any bay, without the need to recalibrate
- Connected system:
 - Automatic online specifications and software update.
 - Retrieve and print your reports from any PC in the shop
 - Live readings on a secondary screen (tablet) saves trips to the monitor and reduces time

Fast to use

- No stops rolling compensation – fastest rollback on the market, no stops caster sweep.
- The system automatically raises and lowers to track the rack, saving the time of adjusting beam.
- Intelligent predictive alignment flow – core alignment workflow removes unnecessary steps
- Audit check – In less than a minute, identifies if a car needs adjustment: a simple printout shows Camber, Total Toe and Thrust angles.

For the premium shop

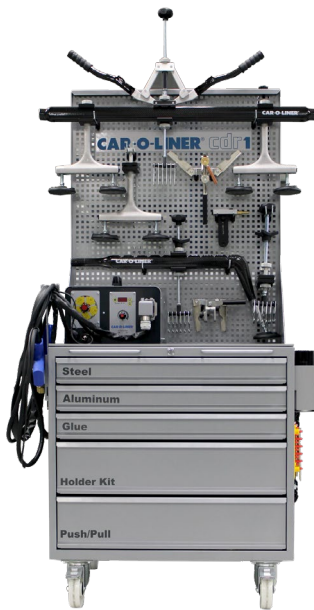
- Perfect for specialists – OEM-guided procedures and ADAS recalibration procedures



TOTAL SHOP SOLUTIONS
Snap-on

CAR-O-LINER®

CDR1 – Cosmetic Dent Repair Workstation



Designed to repair small to medium auto body damage the CDR1 Cosmetic Dent Repair workstation from Car-O-Liner® is a value-packed repair cart that allows you to quickly and efficiently provide professional repairs of light cosmetic damage.

The CDR1 includes the new **CR235 Combi Spotter**. With two separate guns, this unique spotter can easily switch between steel and aluminium welding operations.

CHOOSE A VERSION TO MEET YOUR NEEDS!

BASIC	ADVANCED	MASTER
STEEL + ALUMINIUM	STEEL + ALUMINIUM + GLUE	STEEL + ALUMINIUM + GLUE HOLDER KIT + PUSH-PULL

FEATURES/BENEFITS

- ALL-IN-ONE – The CDR1 contains all the equipment and materials needed to perform light cosmetic collision damage repair quickly and efficiently.
- PORTABLE – Roll the workstation easily to wherever it needs to be.
- VERSATILE – CDR1's small footprint makes it the perfect addition to any workshop.

CR235 COMBI SPOTTER

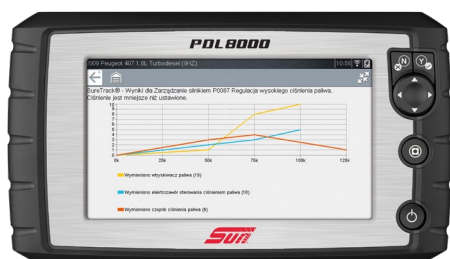
- EFFICIENT – Switch quickly between two dedicated guns; the duo machine meets aluminium and steel welding needs.
- QUICK – Disassembly of the panel is not required, reduce spare parts orders and save up to 40% on repair time.
- PRECISE – Minimize welding and decrease the chance of altering panels through heat or burn-through and eliminate the risk of compromised corrosion protection.

HOFMANN **JohnBean** **CARTEC** **CAR-O-LINER®**

JOSAM **truckCam** **ECOTECHNICS** **BLACKHAWK** **BOXER**



PDL 8000 – the latest scanning tool to bring Intelligent Diagnostics to the SUN PDL range.



Intelligent Diagnostics guides technicians through a logical workflow from start to finish, saving them time and making them more efficient and productive.

The PDL 8000 includes advanced features that help technicians make more money by guiding them to the problem while filtering out unnecessary steps. This new software anticipates your next move and guides you through every step to find the solution by displaying only information relevant to the specific vehicle and fault code. Technicians save time, and the workshop is more efficient and productive.

FEATURES/BENEFITS

- Code Scan One-Touch – Full vehicle code scan & quickly checks and clears codes for all available modules on the vehicle. Performing a pre-scan vehicle system report spots any hidden issues, and a post-scan confirms the correction of the original problems to the customer.
- SURETRACK™ – Quickly determine the most likely fix based on the vehicle-specific model, mileage, codes, components and symptom.
- Technical Service Bulletins (TSB) – Access fault codes and vehicle-specific manufacturer TSBs right from the scanner, making it the ideal place to start the diagnosis.
- Smart Data – Automatically configures the display to show vehicle data parameter ID (PIDs) relevant to the fault code, saving time by filtering out non-related data.
- Built-in two-channel lab scope – The guided component test meter allows technicians to pinpoint issues, helping to identify the faulty component.
- Links to the Snap-on cloud via altusdrive.com – Capture and auto-load pre-scan and post-scan vehicle system reports, plus images and screenshots, via a phone or computer, then share them by text or email to get customers to approve repairs quickly.

HOFMANN  **JohnBean.** **CARTEC**  **SUN** **CAR-O-LINER**

 **JOSAM** **truckCam** **ECOTECHNICS** **BLACKHAWK** **BOXER**



Two Machines in One – ECK Twin 12



ECK TWIN 12 is the renovated expression of the functional and technological skills of the Ecotechnics brand. Two machines in one is the simple, fast and safe solution. ECK TWIN 12 is renewed by adopting some of the most successful modern technological standards.

The ECK Twin is a fully automatic A/C charging station for recovery, recycling and charging for R134a and HFO1234yf.

FEATURES/BENEFITS

- Two independent circuits with specific components for each gas
- New 7" touch screen display for easy, fast and intuitive navigation.
- Energy-saving with 12-volt solenoid valve technology
- Built-in hybrid function for the flushing of service hoses and internal circuits. Indispensable for the service on systems with an electric compressor.
- Optional refrigerant analyser for % detection of refrigerant components tested: HFO1234yf, R134a, R22, HC hydrocarbons and air.
- Automatic test of the A/C system under pressure with nitrogen or hydrogen/nitrogen mixture
- Management of 2 oils and 2 tracers, both with hermetic containers and hermetic cartridges
- Automatic purging of non-condensable gases
- WIFI connection as standard
- The complete database also includes commercial and agricultural vehicles
- Innovative and practical cylinder locking system from the outside
- 100V or 110V transformer available as an optional feature

HOFMANN  **JohnBean.** **CARTEC**  **SUN**  **CAR-O-LINER**

 **JOSAM**  **truckCam**  **ECOTECHNICS**  **BLACKHAWK**  **BOXER**



JOSAM I-track II premium – Wheel alignment as it should be: advanced yet simple



With JOSAM i-track II, a diagnosis of a vehicle's alignment is faster and more efficient than ever before. Set aside one or more places in the workshop allocated for wheel alignment and perform measurement diagnoses on an assembly line basis.

The target scales for I-track II are used either in a mobile set-up or mounted in the workplace floor.

With I-track II premium, you can measure up to four axles (two steered and two rigid) with the base kit. Universal magnetic wheel adapters are quickly attached to the wheel nuts, thereby easing operation on vehicles with aluminum rims. With added wheel adapters, measure even more axles.

FEATURES/BENEFITS

- Optimized for speed and large volumes of vehicles
- Magnetic wheel adapters for quick attachment to the wheels
- Lightweight measuring heads
- Fixed or mobile solution
- Clear and easy-to-use software user interface
- Can measure all kinds of vehicles;
 - Trucks, buses and articulated buses
 - Trailers, semi-trailers and complete carriages
 - Transporters
 - Construction vehicles
- Included in global contracts with Volvo, Renault and Scania
- ADAS calibration add-on



TOTAL SHOP SOLUTIONS
Snap-on

BLACKHAWK

SHARKIII – Universal, electronic, measuring system for diagnosis and repair



The SHARKIII provides reliable, extremely precise and repetitive results on all measuring points. The international vehicle measurement database contains the necessary information to measure an extensive range of vehicles accurately.

The ultrasonic technology and the advanced computer software make this measuring system user-friendly and easy to learn.

SHARKIII is compatible with all Blackhawk® straightening systems and many others.

FEATURES/BENEFITS

Easy and fast to use

- Continuous measuring of 12 points throughout straightening work
- Complete diagnosis in 25 minutes
- Automatic and fast checking of the vehicle position, whatever the angle
- International vehicle measurement database
- Compatible with all Blackhawk straightening systems and with many others
- Four 7.5 cm diameter chrome locking casters ensure a perfect measurement
- 27" LCD HD display for maximum viewing from anywhere around the vehicle
- Probe cords incorporate Velcro straps for easy storage
- Polyurethane foam with accessory identifiers provides maximum separation of magnetic extensions and increased accessory protection

4 main parts make Shark III easy to set up and use

- Ultrasonic emitting probes
- Magnetic connection
- Receiving beam
- The mobile storage cabinet contains a computer, USB stick, keyboard, colour screen and drawers for the accessories

2 Compositions to choose from

- SHA54 / SHA50: Set with 8 probes – without Mc Pherson / with Mc Pherson
- SHA55 / SHA51: Set with 6 probes – without Mc Pherson / with Mc Pherson

HOFMANN  **JohnBean.** **CARTEC**  **SUN**  **CAR-O-LINER®**

 **JOSAM**  **truckCam**  **ECOTECHNICS**  **BLACKHAWK**  **BOXER®**



TOTAL SHOP SOLUTIONS
Snap-on

CARTEC 

New Generation Truck Brake Tester 420-BR



Test all vehicles in loaded condition - normal to high throughput.

The brake tester consists of the roller set, the control unit and the remote control.

Available in 1-speed or 2-speed, 2WD or 4WD configuration. With elevated or level rollers.

FEATURES/BENEFITS

Rollers

- 1000, 1200 or 1300 mm in length
- Corundum coated
- Steel, exclusive SmoothGrip design for spiked tyres
- Drive off the rollers through an electro brake or automatic aid
- Rust-proof feeler rollers

Frame

- Frame completely hot-dip galvanized, not just the covers

Load Cells

- Wear-free strain-gauge type load cells

Motor

- Splash-proof motors
- Motors are under the roller with the option of being equipped with brakes

HOFMANN  **JohnBean.** **CARTEC**  **SUN**  **CAR-O-LINER**[®]

 **JOSAM**[®] **truckCam**[®] **ECOTECHNICS**[®] **BLACKHAWK** **BOXER**[®]

TSS TOTAL SHOP SOLUTIONS

Introducing! H4PRO Induction Heater



The H4PRO handy induction heater can be used anywhere it is needed, even outside of the workshop! The plastic frame covering gives robust protection, while the heat-control interface ensures safe heating.

It's modular — use the connectable interface to set up the H4PRO in the Cooler Trolley (optional). The trolley is perfect for regions with warmer climates and extended operation time with immense heat.

FEATURES/BENEFITS

- Lightweight – easy to move to wherever induction heating is needed
- Mobile – two handles for the easy and safe movement of the unit
- 5-inch color display – easy to follow the intuitive workflow
- Manual mode – 5 power levels and a timer count-down for control and repeatable heating
- Program modes – insure against overheating of the tie rod, camber and wheel bolts and preserve the steel quality
- Water on/off switch – for safe changing of induction head
- Long hose cable – 3m for greater reach and accessibility
- Movable trigger button – increase accessibility with extended two-hand control, one hand for the trigger button and the other hand holding the induction handle
- Modular – adaptable to the Cooler Trolley, extends your operation time and duty cycle, perfect for warmer climates (optional equipment)
- 20L water tank – perfect for time-consuming operations

HOFMANN  **JohnBean.** **CARTEC**  **SUN** **CAR-O-LINER**

 **JOSAM** **truckCam**  **ECOTECHNICS** **BLACKHAWK** **BOXER**