

# MEASURING SYSTEM FOR HEAVY-DUTY VEHICLES

JOSAM LASER AM



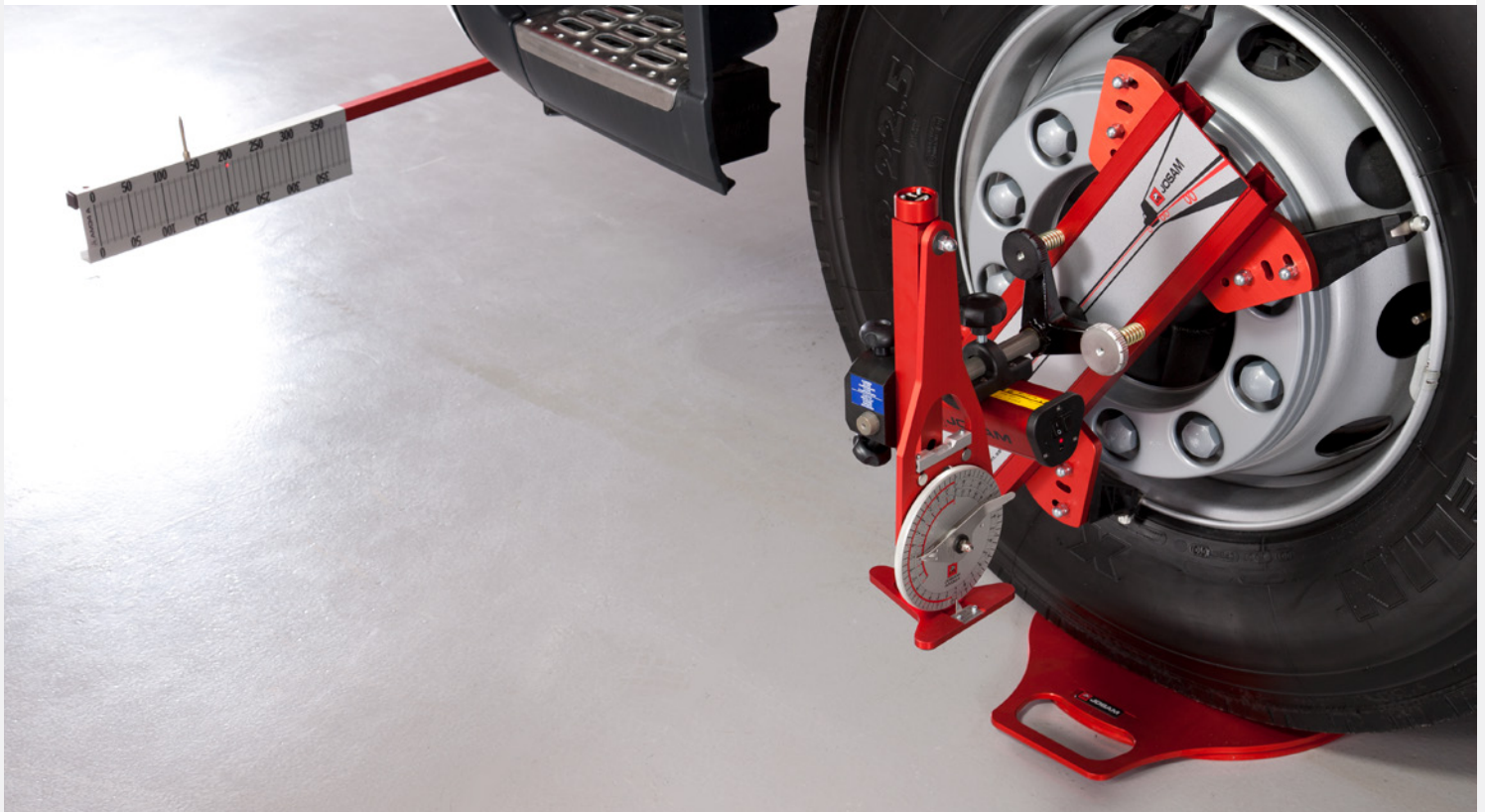
**JOSAM®**



# JOSAM LASER AM

## MEASURING SYSTEM FOR WHEELS, AXLES AND FRAMES

JOSAM® Laser AM is a way to improve traffic safety, reduce fuel consumption and tyre wear. It is the optimal entry-level system for reliably measuring axle positions and performing wheel alignment. All wheel angles can be checked simply and easily. Measurement and adjustment with Laser AM result in a balanced carriage, where wheels, axles and chassis are rolling in the same direction.



## WHY WHEEL ALIGNMENT?

By measuring and adjusting wheel angles on a vehicle, fuel costs and tyre wear can be reduced. At the same time, driver comfort, road safety and driveability is improved. This leads to a better economy and environment for everyone.

# INCREASE YOUR REVENUE

## GROW WITH NEW BUSINESS OPPORTUNITIES

For workshops, this system is the perfect tool for expanding the level of service. Laser AM is easy to use, calibrate and maintain. The alignment process is also accelerated. The results are accurate and offer good repeatability.

Moreover, Laser AM also allows for checking the chassis and frame of vehicles and other frame constructions.



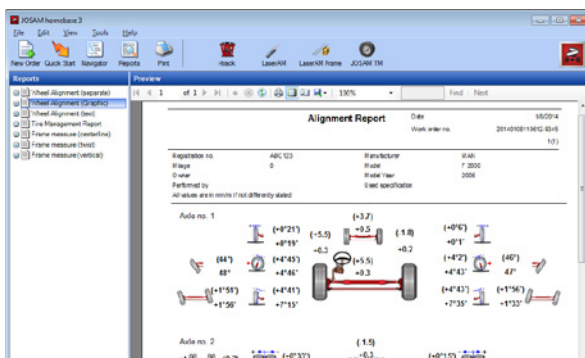
### Accessible storage solution

The equipment is stored on wall panels (2,430×1,675 mm) or on a movable trolley.



### Laser unit

The diode laser and charger are provided in a case. The Ni-Mh batteries offer up to 50 hours of continuous use.



### PC software

The software platform, Homebase 3, includes a Laser AM plugin, which helps the operator calculate and store wheel angles. The report can be printed or saved as a PDF.



### Frame measurement

Laser AM can easily be configured to measure chassis and frames. A frame check is part of every alignment procedure.





# WE STAND BY YOUR SIDE

FROM INSTALLATION TO PROFITABLE BUSINESS

## INSTALLATION AT YOUR WORKSHOP

We ensure the delivery and on-site installation of your equipment as per our agreement, including all the necessary adjustments required for your workshop.

## THE JOSAM ACADEMY – WORLDWIDE TRAINING PROGRAMS

We know our products are only as good as the support and training provided, and we at Josam are proud of our unique educational program, which helps you and your co-workers get the most from your investment.

## SUPPORT TO KEEP YOUR BUSINESS RUNNING

In addition to our two-year warranty on all equipment, Josam is never far away. The same goes for our distributors. If you have any questions or need assistance with anything related to Josam equipment, our ambition is to provide you with the best possible support.



## REPRESENTATIVE:

## MANUFACTURER:



Car-O-Liner Group AB • Box 419 • SE-701 48 Örebro • Sweden  
Tel: +46 19 30 40 00 • E-mail: [info@josam.se](mailto:info@josam.se)  
Internet: [www.josam.se](http://www.josam.se)

JOSAM® (2024) is a trademark of Snap-on Incorporated. All rights reserved.