



JOSAM cam-aligner



Software installation guide

Contents

Installation of wireless server	3
Software installation	7

Install wireless server (Windows 7)

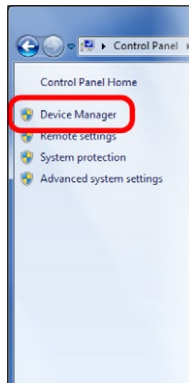
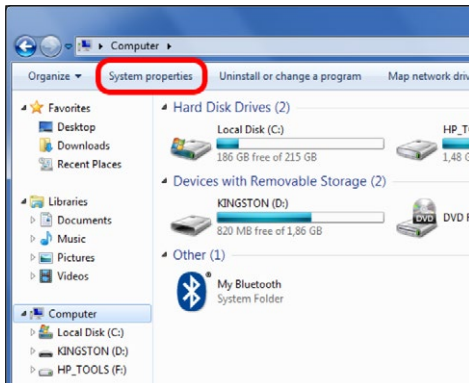
Plug the wireless server into a USB port, and Windows will find the server. If your computer is connected to the Internet, Windows Update will automatically install the device driver.

Otherwise Windows will tell you that the device driver was not installed correctly. In that case, please follow the steps described below.

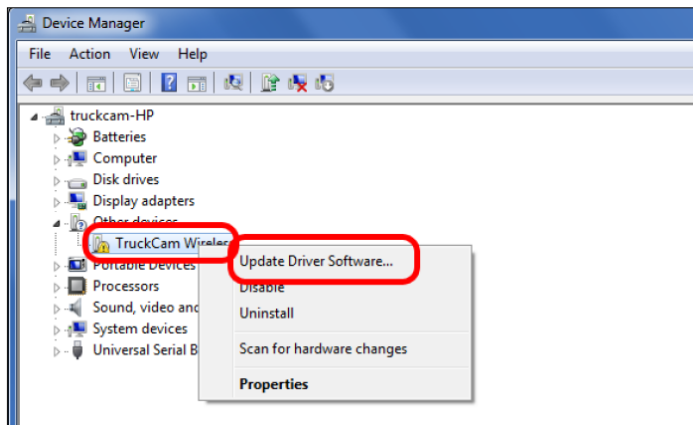
Installing the server device driver manually

Open the **Start menu**, and click **[Computer]** in the list to the right, to open the Computer window.

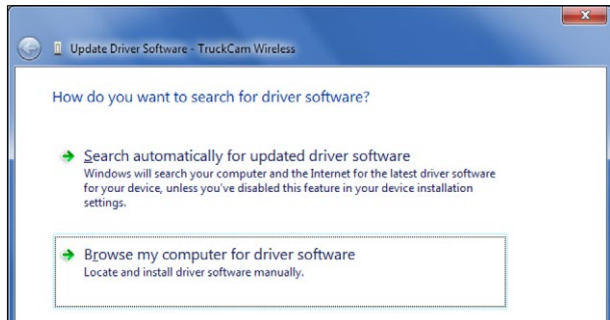
Click **[System Properties]**, and then **[Device Manager]**.



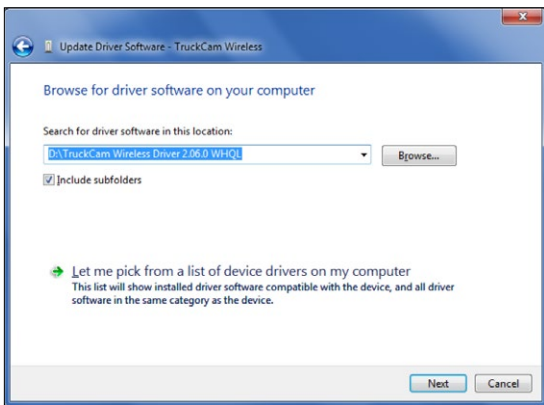
In the Device Manager you will see the wireless unit displaying a question mark warning. Right-click on “TruckCam Wireless” and choose **[Update driver software]**.



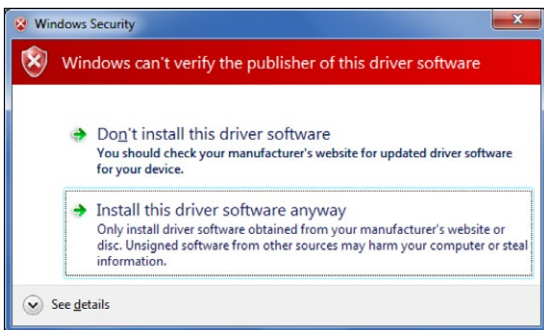
Choose to browse your computer for the device driver software.



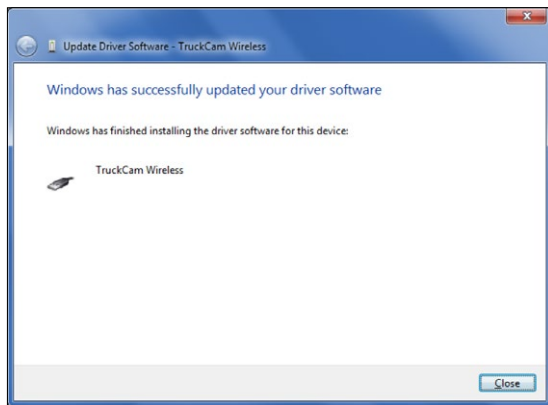
Specify a location by browsing to the driver location. Click **[Next]**.



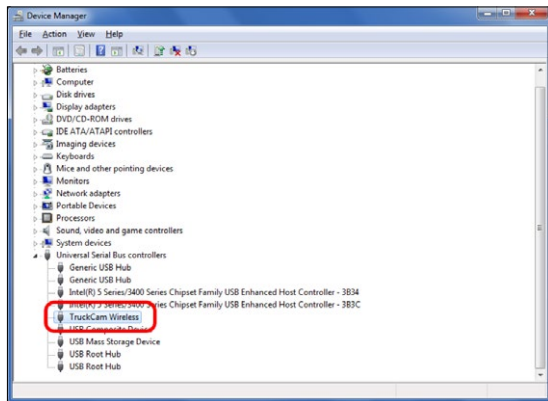
Click **[Install this driver software anyway]**. The device driver for the wireless server is perfectly Windows compatible and can be installed without risks, although this warning might occur during installation.



Click **[Close]** when the device driver has been completely installed.



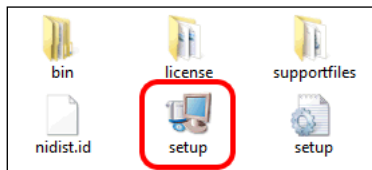
The wireless unit will now show up properly in the list of USB controllers.



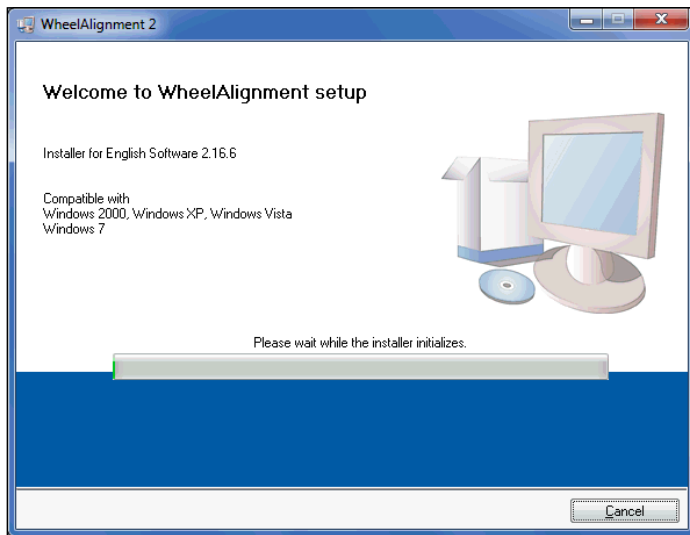
JOSAM cam-aligner installation

Load the TruckCam Software DVD, and choose the folder for the applicable language.

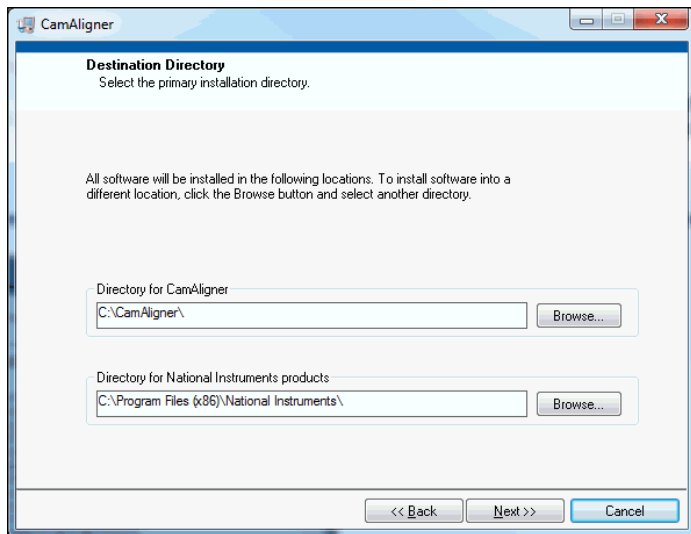
Double click on the 'Setup' icon.



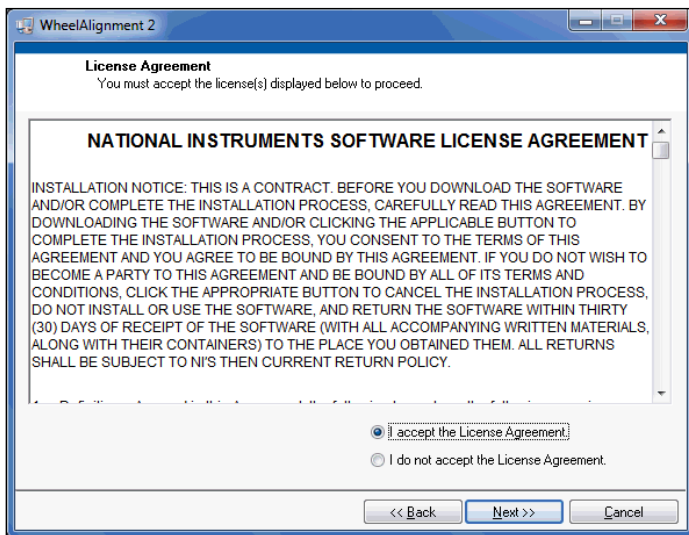
The software installation process will start up.



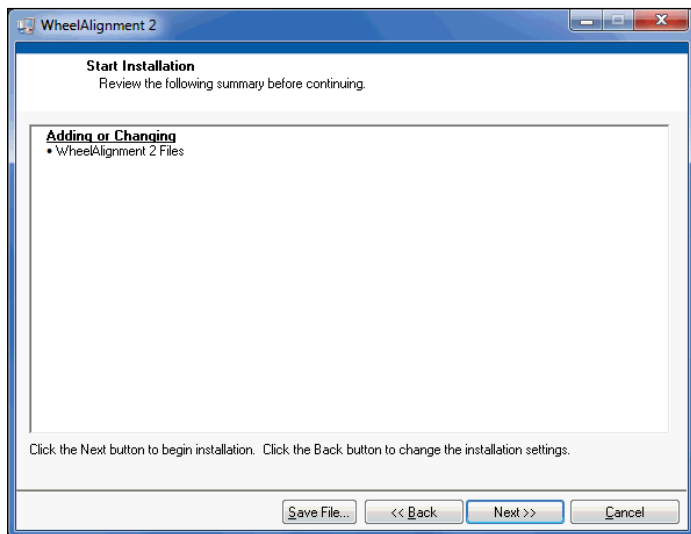
Choose to install the TruckCam program in a different folder by clicking **[Browse]** or continue the installation by clicking **[Next]**.



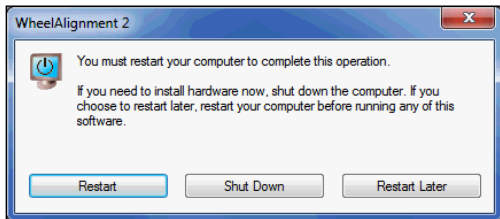
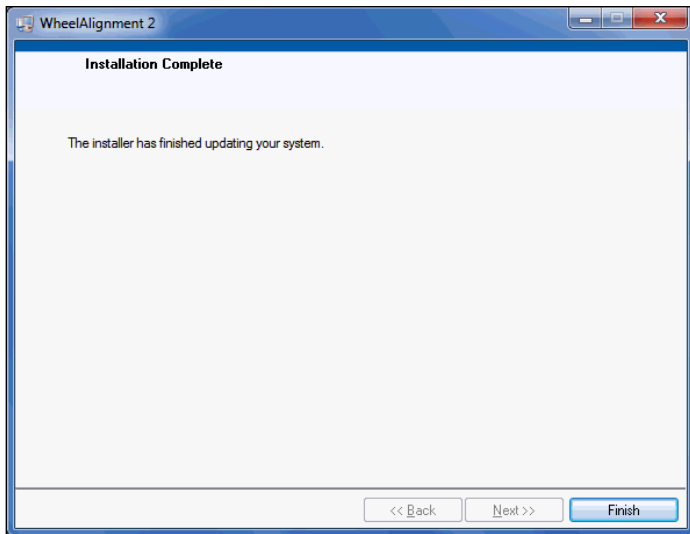
Click 'I accept the license agreement' and then click **[Next]**.



Click **[Next]**.



Click **[Finish]** when installation is complete. If the 'Restart' warning dialog shows, please click **[Restart]** to restart the computer before starting to use your cam-aligner system, in order for the software to work properly.





JOSAM[®]

www.josam.se